



MONTHLY MEMBERSHIP PROGRESS REPORT

District 2 A3

Results as of: 03/31/2019

GMT: GREGORY GILLIAM

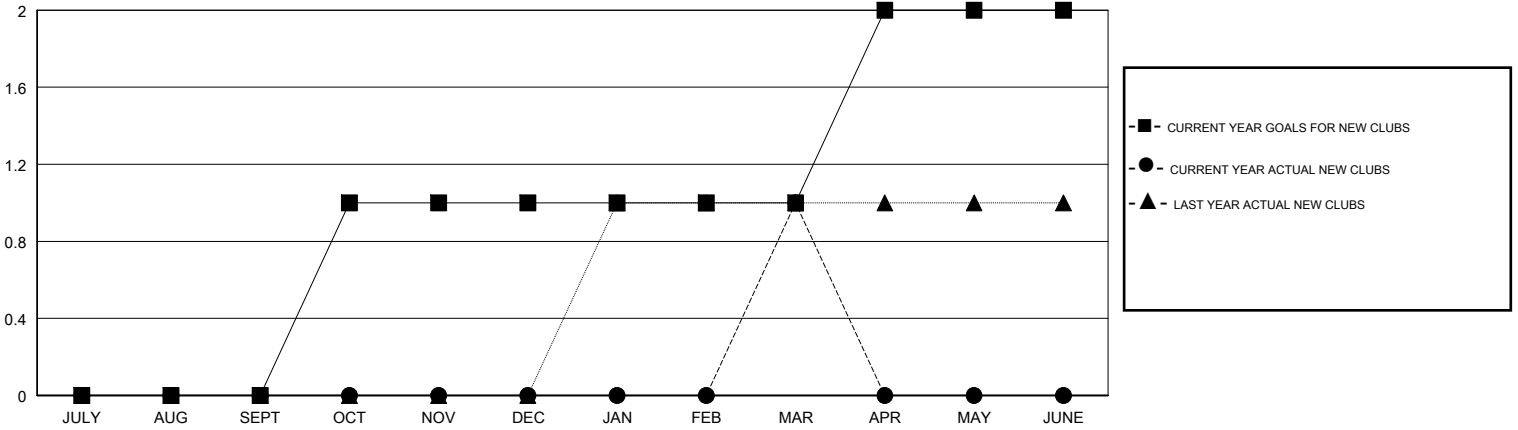
LOCATION TEXAS

GMT CA

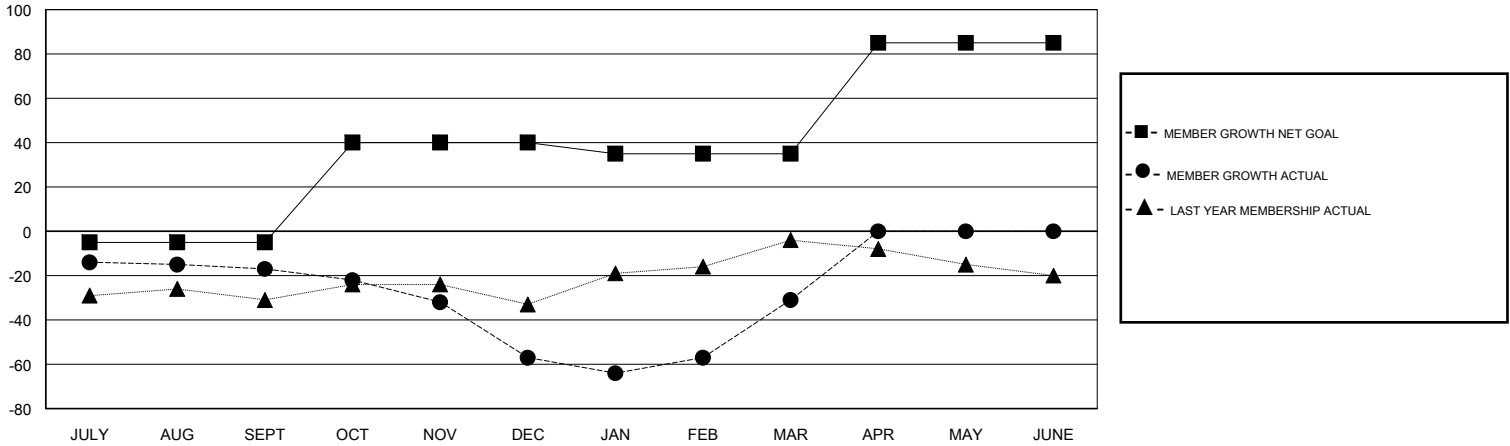
Clubs			
RESULTS FOR 2018-2019			
QUARTER	NEW CLUB GOAL	NEW CLUBS	DROPPED CLUBS
JULY/AUG/SEPT	0	0	0
OCT/NOV/DEC	1	0	0
JAN/FEB/MAR	0	1	0
APR/MAY/JUNE	1	0	0

Members			
RESULTS FOR 2018-2019			
QUARTER	MEMBER GROWTH NET GOAL	MEMBER GROWTH ACTUAL	DROPPED MEMBERS ACTUAL (including transfers)
JULY/AUG/SEPT	-5	37	48
OCT/NOV/DEC	45	26	61
JAN/FEB/MAR	-5	58	29
APR/MAY/JUNE	50	0	0

GOALS AND ACTUAL NEW CLUBS CUMULATIVE



GOALS AND ACTUAL MEMBERS CUMULATIVE



DROPPED CLUBS: 0	27 CLUBS OF 55 ADDED 1 OR MORE NEW MEMBERS	<u>GENDER DISTRIBUTION</u>	
DROPPED MEMBERS		MALE	787 (64.24%)
DECEASED	11	FEMALE	438 (35.76%)
CLUB CANCELLED	0	Women Percentage Fiscal Year Goal: 40%	
OTHER	127	TOTAL FAMILY UNIT MEMBERS	183
TOTAL	138	FAMILY MEMBERS PAYING HALF DUES	97

[CLICK HERE FOR CUMULATIVE MEMBERSHIP DATA](#)